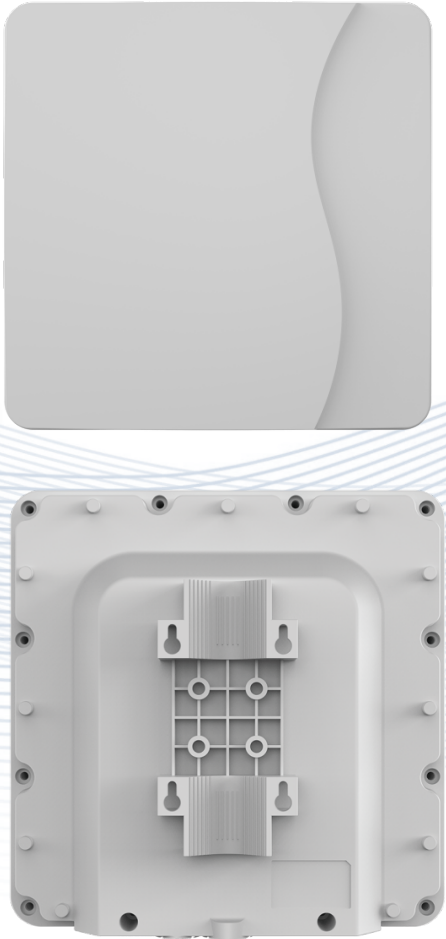


CP880 CPE DATASHEET



CP880

LTE Outdoor CPE

3GPP Release 12

CAT12

All LTE Bands

PoE

IP67

The CP880 from SUNWAVE is a premium outdoor LTE CPE. The product provides a high throughput data transmission network for residential, commercial and enterprise users. Customers enjoy an easy plug & play broadband access solution and large area coverage for various network service scenarios.

CP880 CPE DATASHEET

RF SPECIFICATIONS			
Supports Bands	CP880-A	Band 1/3/7/8/20/38/41/42/43/48	
	CP880-B	Band 42/43/48	
	CP880-C	Band 7/38/41	
Carrier Aggregation (CA)	Supports both Intra- and Inter- band ca DL 2 CA 4 x 4 MIMO DL 4 CA 2 x 2 MIMO UL 2 CA		
MIMO	DL 2 x 2 (4 CA 256 QAM) DL 4 x 4 (2 CA 64 QAM) UL 2 x 2 64 QAM		
Tx / Rx	2 Tx / 4 Rx		
Transmission Mode	TM 1/2/3/4/5/6/7/8/9		
Output Power @ 25 °C 77 °F	Max 23 ± 2dBm, configurable		
Receiving Sensitivity	FDD	-100dBm/ 10 MHz @ QPSK	
	TDD	-97dBm/ 20 MHz @ QPSK	
LTE Antenna	4 directional antennas		
LTE Antenna Gain	CP880-A (Wide-range Band)	700 MHz ~ 1 GHz	6 dBi
		1.7 GHz ~ 2.1 GHz	7 dBi
		2.3 GHz ~ 2.7 GHz	9 dBi
		3.4 GHz ~ 3.8 GHz	8 dBi
	CP880-B (3.5 GHz Only with High Gain)	3.4 GHz ~ 3.8 GHz	16 dBi
	CP880-C (2.5 GHz Only with High Gain)	2.4 GHz ~ 2.7 GHz	13 dBi

HARDWARE SPECIFICATIONS	
LTE Standard	3GPP Release 12, CAT 12
Flash	2 GB
DDR	2 GB
Power Supply	24V Non-standard PoE default IEEE 802.3 at compatible PoE customized
Ethernet LAN Port/POE Input	(1) Gigabit RJ45 PoE LAN Port 10/100/1000M auto-sensing MDI/ MDIX
IP Rating	IP67
LED	4 LED indicators (PWR, NET, SIM, RF signal)
USIM	Supports 1.8V/ 3.0V 2FF USIM

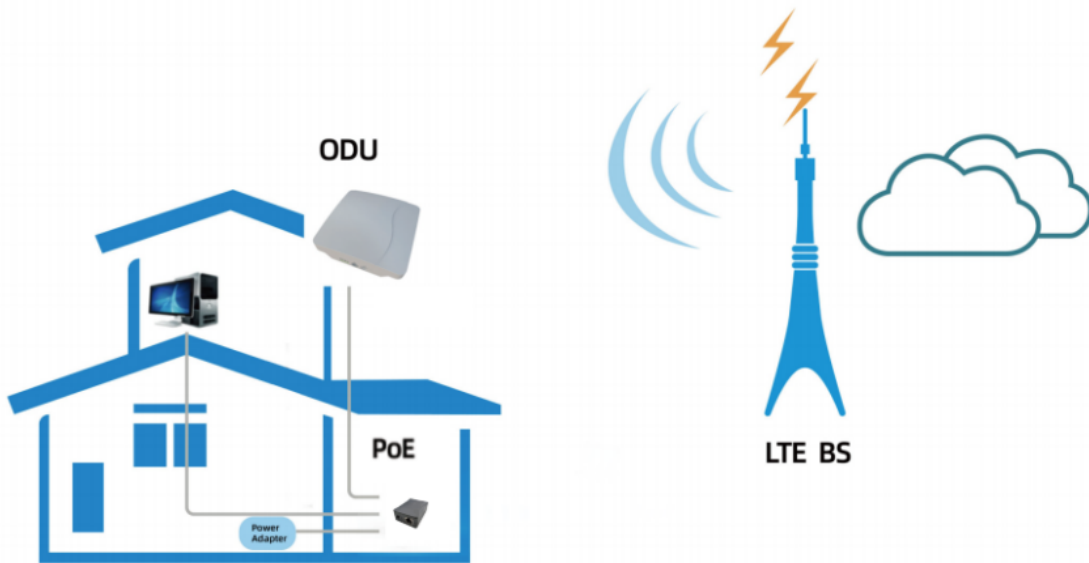
CP880 CPE DATASHEET

RJ45	(1) Gigabit RJ45
Reset	Reset and restore factory setup
Antenna	4 directional antennas
Dimensions	288 mm x 288 mm x 82 mm 11.3 in x 11.3 in x 3.2 in
Weight	ODU < 2 kg 4.41 lbs
Power Consumption	< 10W
Power Adapter	Input: AC 90 ~ 240V Output: DC 24V/ 0.5A

ENVIRONMENT SPECIFICATIONS

Temperature	Operating	-30 °C ~ 60 °C -22 °F ~ 140 °F
	Storage	-40 °C ~ 85 °C -40 °F ~ 185 °F
Humidity	Operating	10 ~ 90%
	Storage	5 ~ 95%

TOPOLOGY



SOFTWARE SPECIFICATIONS

Language Default Setting: English (alternative language can be customized)	
Supports NAT/ bridge/ router mode	
Supports the Http or Https web server	
Supports 2 Users (Admin user and normal user) with different limitation and display	
Peak Throughput	FDD DL 800 Mbps (4 CC 256 QAM) FDD UL 150 Mbps (4 CC 256 QAM) TDD DL 560 Mbps (configuration 2:7) TDD UL 30 Mbps (configuration 2:7)

CP880 CPE DATASHEET

LAN	1000 Mbps
	MDI/ MDIX Auto-sensing
	IEEE802.3/ 802.3u/ 802.3ab compatible
PIN management, SIM card authentication	
Encryption backup current settings and restore the backup settings	
Export current diagnosis results and operation logs	
Statistics	Link status (LAN)
	Transmit/ receive traffic in packets
	Up time
Supports multiple APN	
VPN	IPSec
	PPTP
	L2TP V2/V3
	GRE L2/L3
VPN pass-through	
IPv6/IPv4 dual stack	
Status	Signal strength
	Network type
	Network connection status
	SIM card status
	Operator name, system mode
Supports full band or preferred band and frequency	
Supports PCI lock (cell lock), band lock, PLMN lock	
Supports BIP	

DEVICE MANAGEMENT

Integrity Check	Image one version
	Image one checksum
	Image two version
	Image two checksum
Version Rollback	Automatically rollback to previous version when upgrade fails
Software Upgrade HTTP/FTP Auto Upgrade	Full image upgrade
	Firmware upgrade manually
	Enable/ disable upgrade firmware
	Upgrade URL
	Version file
	Check new firmware every (hr: 1 ~ 744)
	Start time
Random time	
TR-069	Upload/ download the ACS specified file
	Download CPE configuration file

CP880 CPE DATASHEET

	Configure & queries parameters
	Remote upgrade
	CPE version update
	Debugging operations
	Cycle monitor
Port Mirror	Can be enabled or disabled
Syslog	Log can be sent to the PC via LAN
Diagnostics	Ping and trace route

BRIDGE MODE

Data Traffic Forward	Forward the data traffic between the LTE network and PCs
Maximum 4 PCs Support	Each PC connects to the LTE public network via one APN
Managed Module	Possible to allocate each APN for the module, manageable module via TR-069 remote update version
Public IP Allocation	Public IP dynamically allocated to PC from the DHCP server Public IP received by CPE from LTE network
Multiple APN	Supports up to 4 APNs, possible to set up static route for each APN

ROUTER MODE

LAN	Set 2 IP addresses on the LAN, for 2 different networks
WAN	WAN IP: dynamic or static
Router Protocol	Static route
DNS	Adjustable
Multiple APN	Supports up to 4 APNs, possible to set static route for each APN

NAT MODE

NAT	Supports NAT function
Firewall	Possible to enable or disable the firewall
Multiple APN	Supports up to 4 APNs, possible to set static route for each APN
DMZ	Possible to be Set
DHCP Server	Supports DHCP
DNS	Supports both auto DNS or manual DNS configuration

FIREWALL FEATURES

Firewall Configuration	Allow Ping from WAN
	Allow HTTPs login from WAN
	HTTPs login port from WAN
	DMZ
	DDOS
	Redirect ICMP to the host
Supports IP filtering	

CP880 CPE DATASHEET

Supports MAC filtering
Supports URL filtering
Supports UPnP
Supports Port forwarding

APPENDIX-DELIVERS

CP880 Outdoor CPE	1 PCS
PoE Adapter	1 PCS
Accessories for Pole Mounting	1 PCS

Contact Us Today

www.sunwave.com

en.sunwave.com